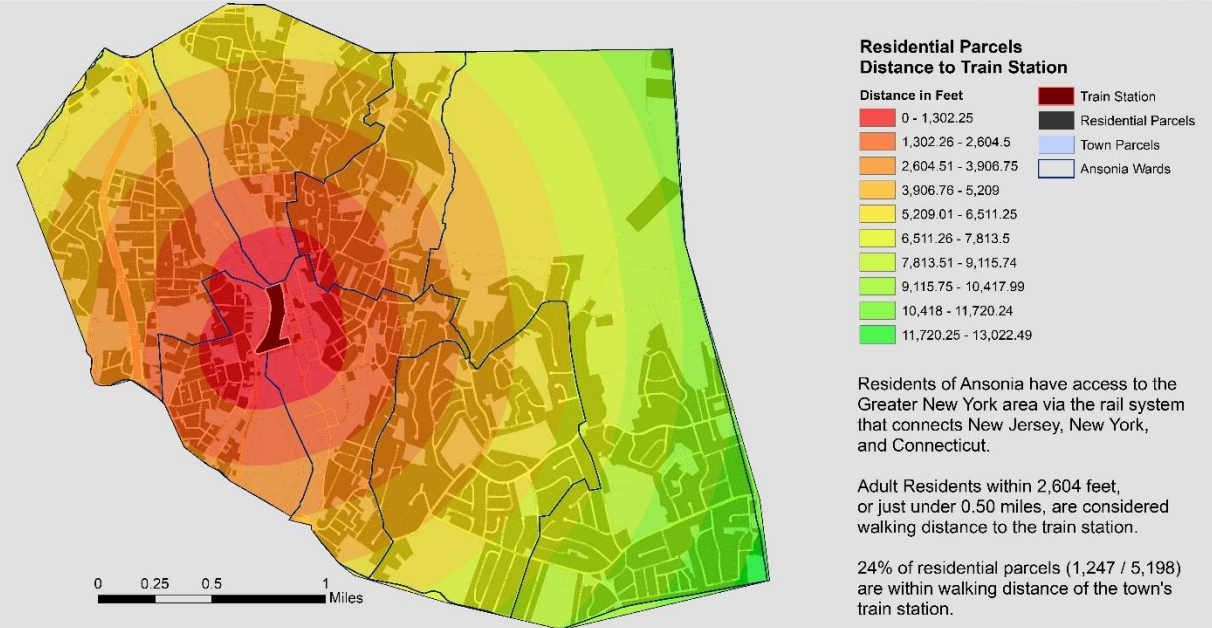
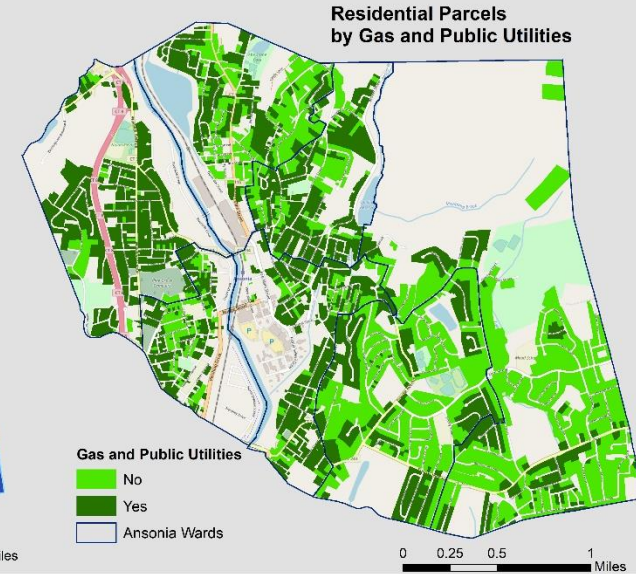
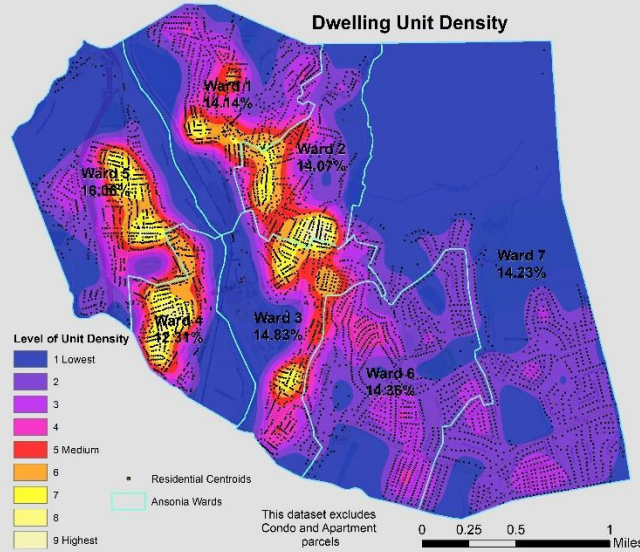
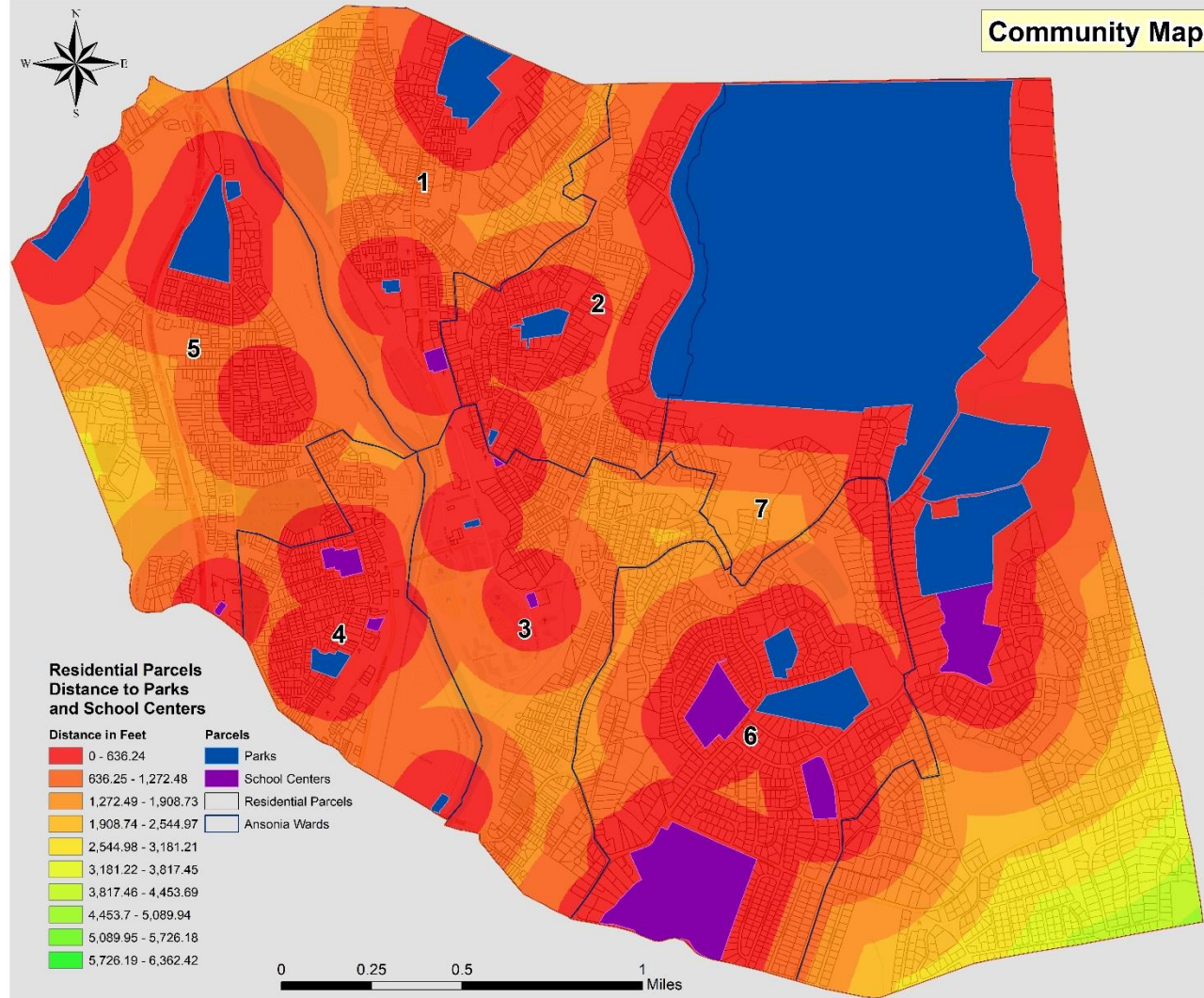


Community Maps of Ansonia, CT



One trademark of a great town is a high level of walkability. For this analysis, 1,272.5 feet or just under 0.25 miles is considered walking distance. 79% of residential parcels (4,104 / 5,198) are within walking distance from either a park or school center.

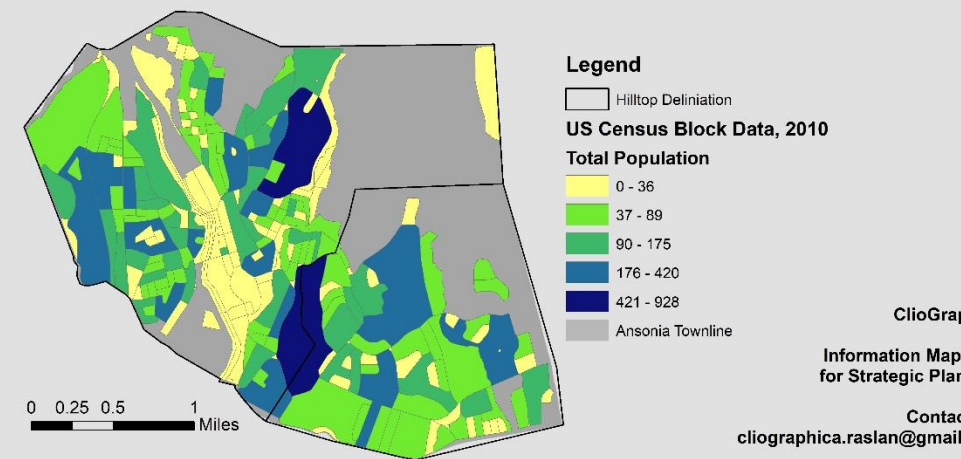
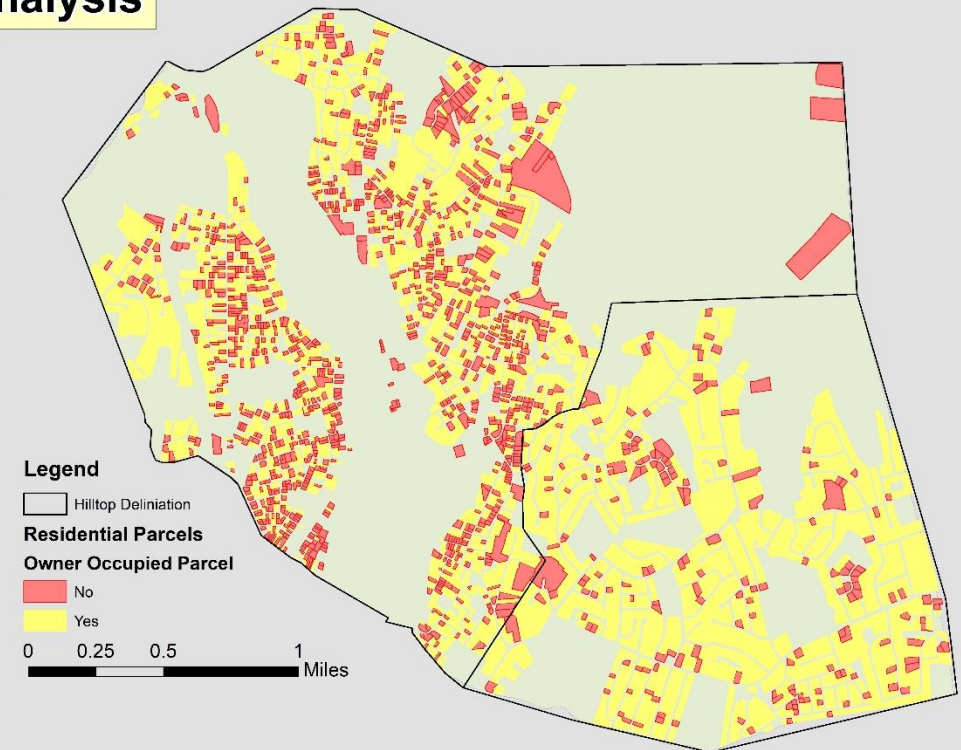
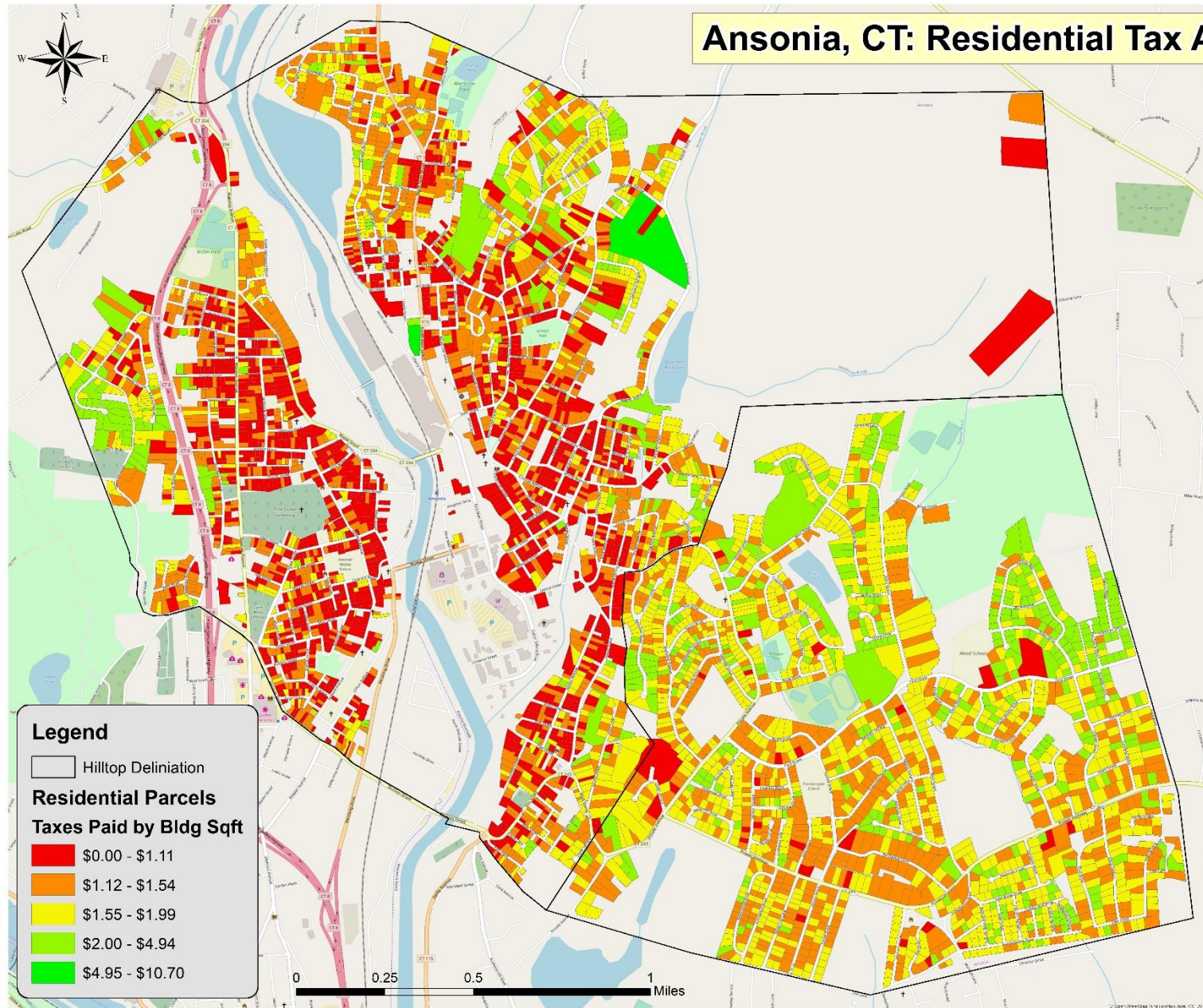
Although by these standards Ansonia could be considered walkable, 1,094 residential parcels (21%) are still outside a walkable radius of a school center or public park. This kind of geospatial modeling can help the community identify and plan for areas in need of future development.

Residents of Ansonia have access to the Greater New York area via the rail system that connects New Jersey, New York, and Connecticut.

Adult Residents within 2,604 feet, or just under 0.50 miles, are considered walking distance to the train station.

24% of residential parcels (1,247 / 5,198) are within walking distance of the town's train station.

Ansonia, CT: Residential Tax Analysis

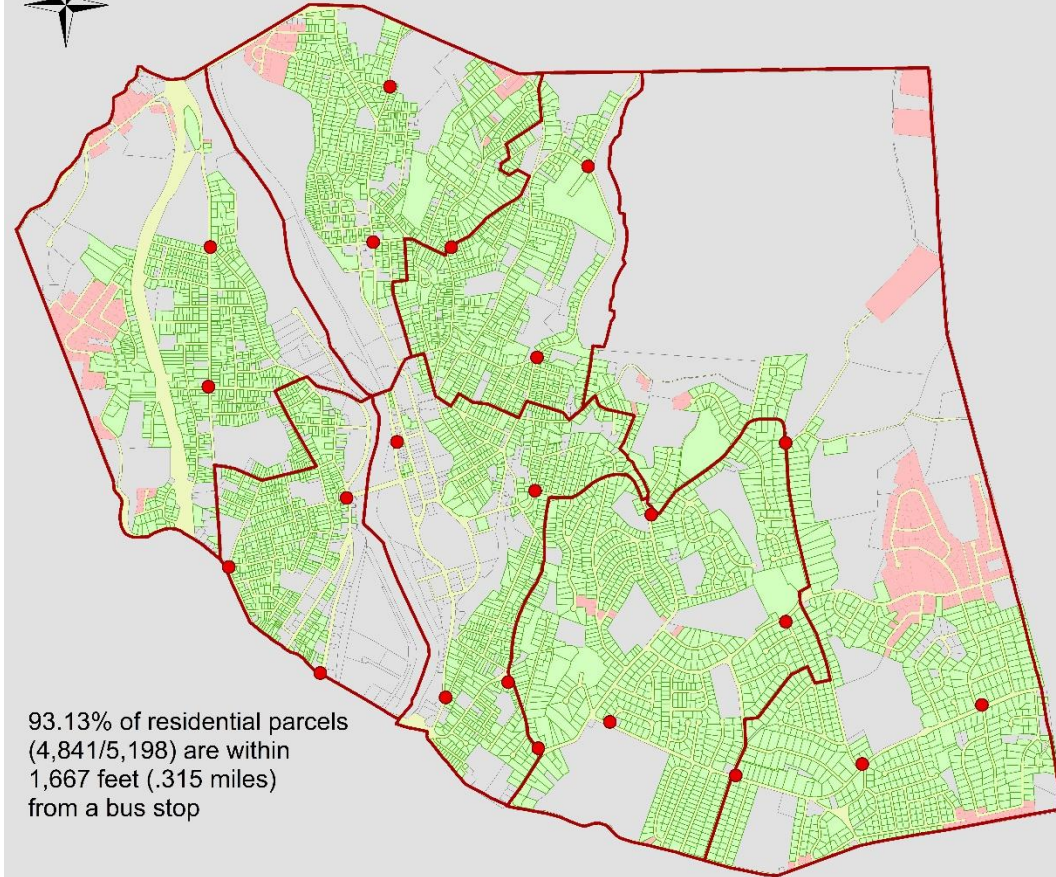


ClioGraphica

Information Mapping
for Strategic Planning

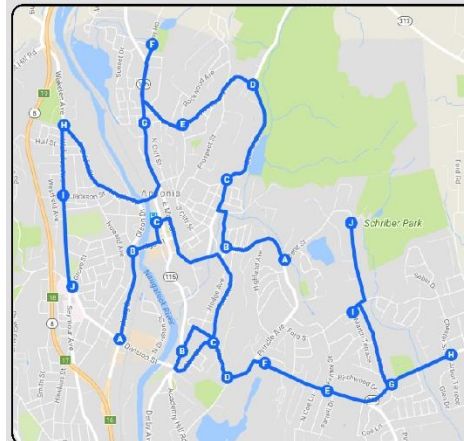
Contact us:
cliographica.raslan@gmail.com

Proposed Ansonia Shuttle Stops



93.13% of residential parcels
(4,841/5,198) are within
1,667 feet (.315 miles)
from a bus stop

Sample Routes for Ansonia Shuttle



Legend

- Bus Stops
- Ansonia Wards
- Residential Parcels Within Walking Distance
- Residential Parcels Outside Walking Distance
- Other Town Parcels
- Ansonia Townline

ClioGraphica

Information Mapping
for Strategic Planning

Contact us:
cliographica.raslan@gmail.com



0 0.25 0.5 1 Miles

Legend

Year Built	1802	1867	1885	1901	1916	1931	1946	1961	1976	1991	2006
1672	1805	1869	1886	1902	1917	1932	1947	1962	1977	1992	2007
1700	1810	1870	1887	1903	1918	1933	1948	1963	1978	1993	2008
1710	1830	1871	1888	1904	1919	1934	1949	1964	1979	1994	2009
1712	1835	1872	1889	1905	1920	1935	1950	1965	1980	1995	2010
1757	1840	1873	1890	1906	1921	1936	1951	1966	1981	1996	2011
1760	1848	1874	1891	1907	1922	1937	1952	1967	1982	1997	2012
1775	1850	1875	1892	1908	1923	1938	1953	1968	1983	1998	2013
1778	1852	1878	1893	1909	1924	1939	1954	1969	1984	1999	2014
1780	1853	1879	1895	1910	1925	1940	1955	1970	1985	2000	2015
1789	1860	1880	1896	1911	1926	1941	1956	1971	1986	2001	2016
1790	1863	1881	1897	1912	1927	1942	1957	1972	1987	2002	Ansonia Wards
1793	1864	1882	1898	1913	1928	1943	1958	1973	1988	2003	Other Town Parcels
1797	1865	1883	1899	1914	1929	1944	1959	1974	1989	2004	Ansonia Townline
1800	1866	1884	1900	1915	1930	1945	1960	1975	1990	2005	

Corner lots/Potential
campaign sign locations



Legend

- campaign_sign_location_parcel
- residential_parcel
- parcel_table_join

0 0.125 0.25 0.5
Miles

