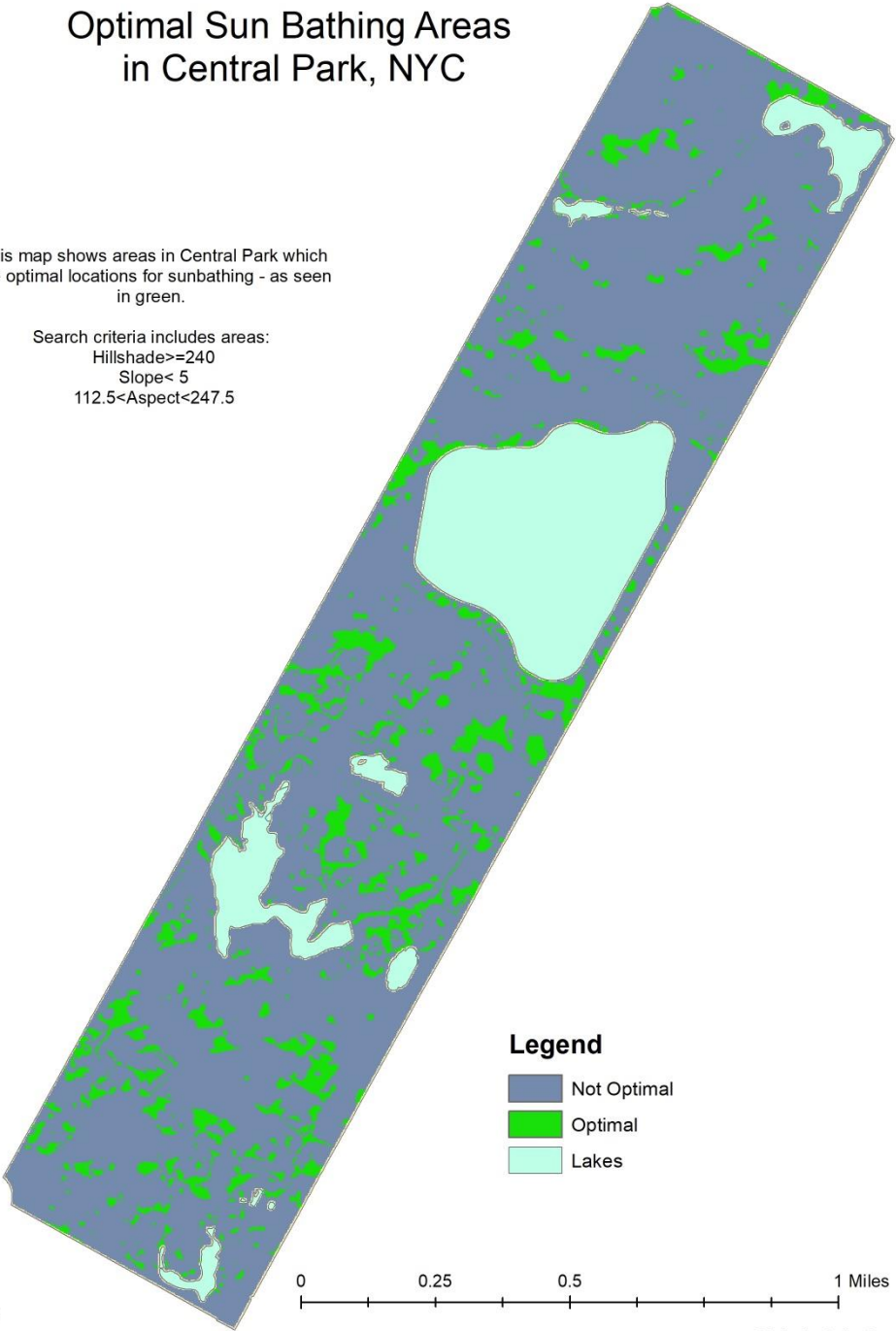


Optimal Sun Bathing Areas in Central Park, NYC

This map shows areas in Central Park which
are optimal locations for sunbathing - as seen
in green.

Search criteria includes areas:
Hillshade>=240
Slope< 5
112.5<Aspect<247.5



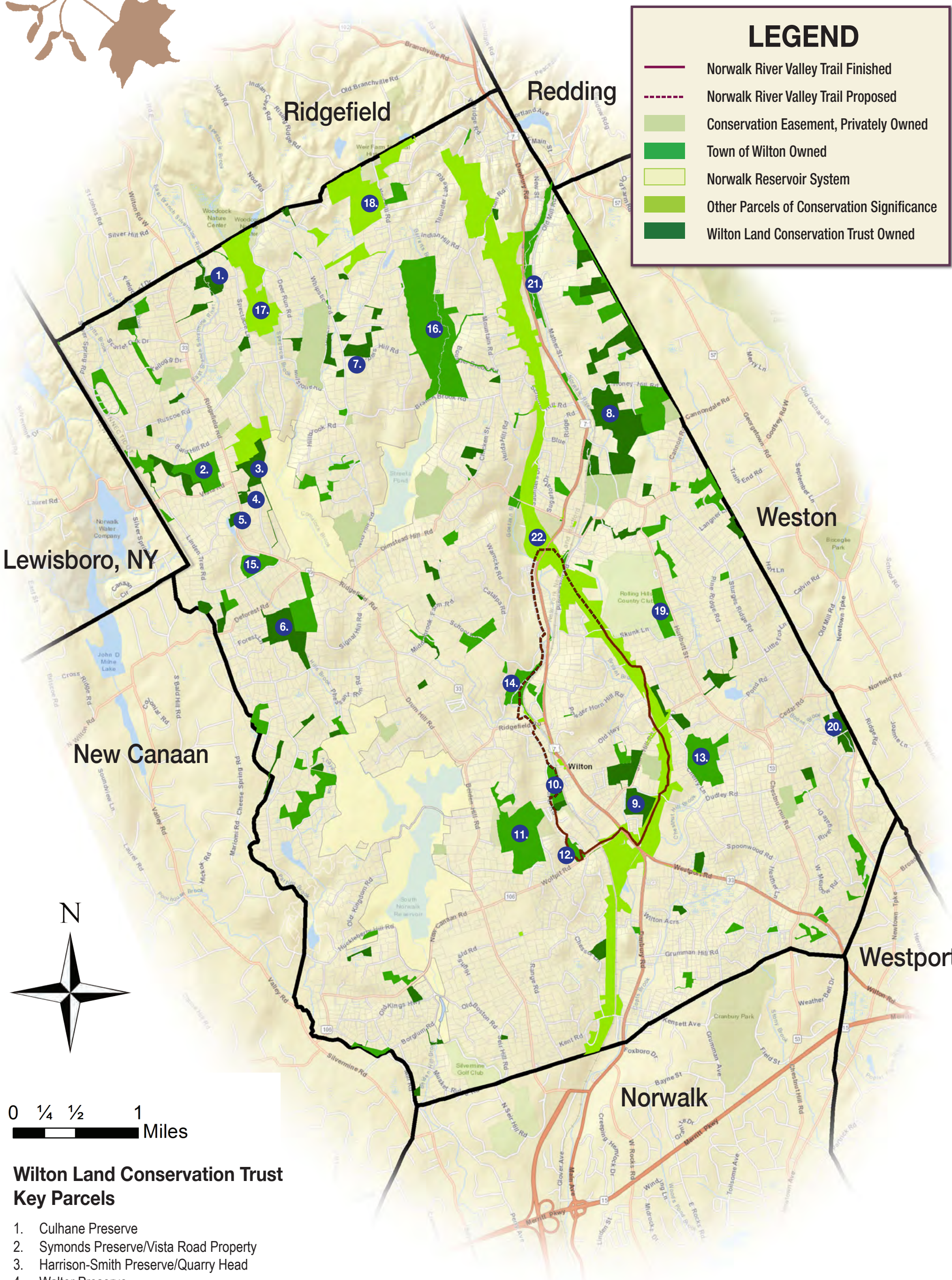
Legend

- Not Optimal
- Optimal
- Lakes



0 0.25 0.5 1 Miles

Wilton Land Conservation Trust



LEGEND

- Norwalk River Valley Trail Finished
- Norwalk River Valley Trail Proposed
- Conservation Easement, Privately Owned
- Town of Wilton Owned
- Norwalk Reservoir System
- Other Parcels of Conservation Significance
- Wilton Land Conservation Trust Owned

Wilton Land Conservation Trust Key Parcels

1. Culhane Preserve
2. Symonds Preserve/Vista Road Property
3. Harrison-Smith Preserve/Quarry Head
4. Walter Preserve
5. Keeler's Ridge Meadow
6. Marble/Van Haelewyn-Richards Preserve/Sackett Preserve
7. Slaughter Fields
8. Gregg Preserve/Belknap Preserve
9. Spencer-Rice Preserve
10. Schenck's Island

Other Town of Wilton Parks

11. Bradley Park
12. Horseshoe Pond
13. Cherry Land Park
14. Merwin Meadows
15. Kent Pond
16. Town Forest

Other Land of Conservation Value

17. Woodcock Nature Center
18. Weir Farm National Historic Site/Weir Preserve
19. Ambler Farm
20. Stonebridge Wild Fowl Preserve
21. Lion's Field
22. Norwalk River Valley Trail, proposed corridor

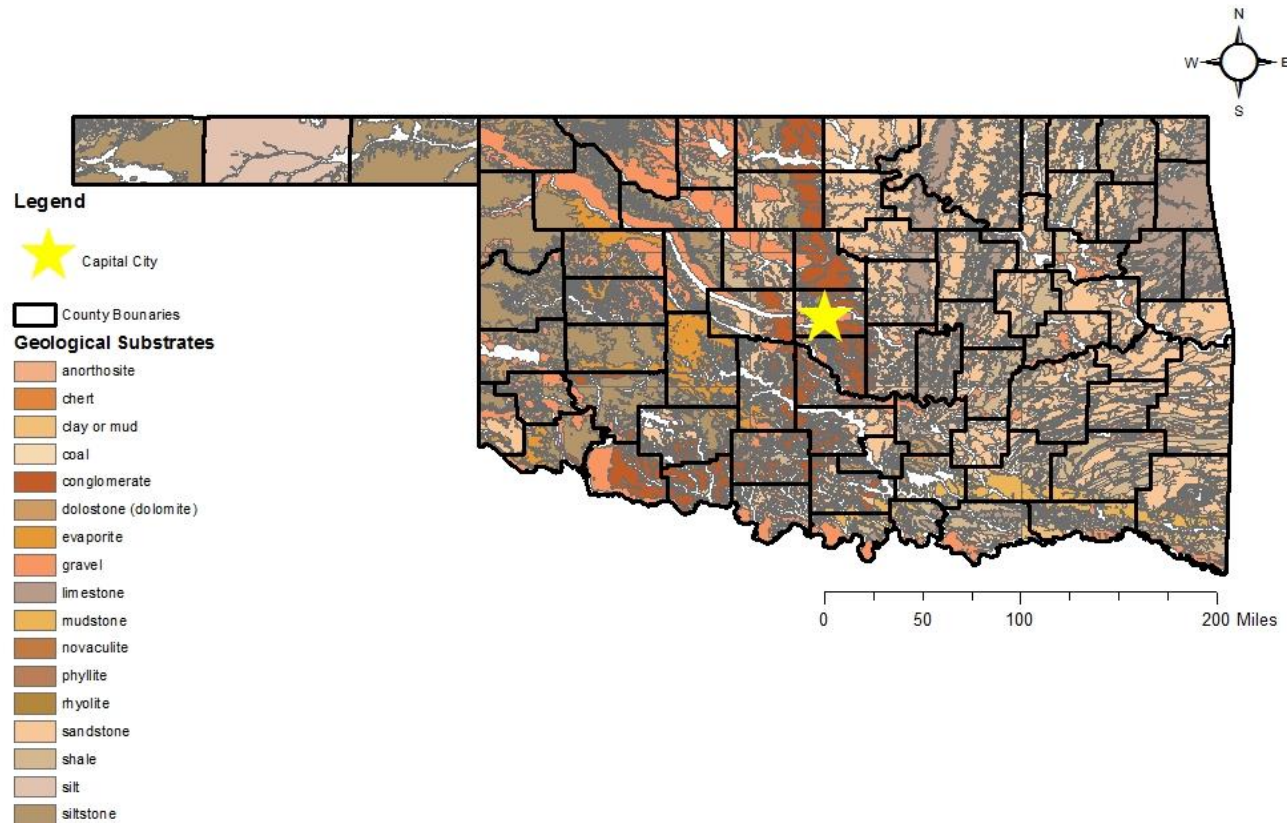


Fairfield County Bank

Map created
on 10/22/17
by Mike Moran
GIS Analyst

Fracking

Geological Substrates and County Boundaries



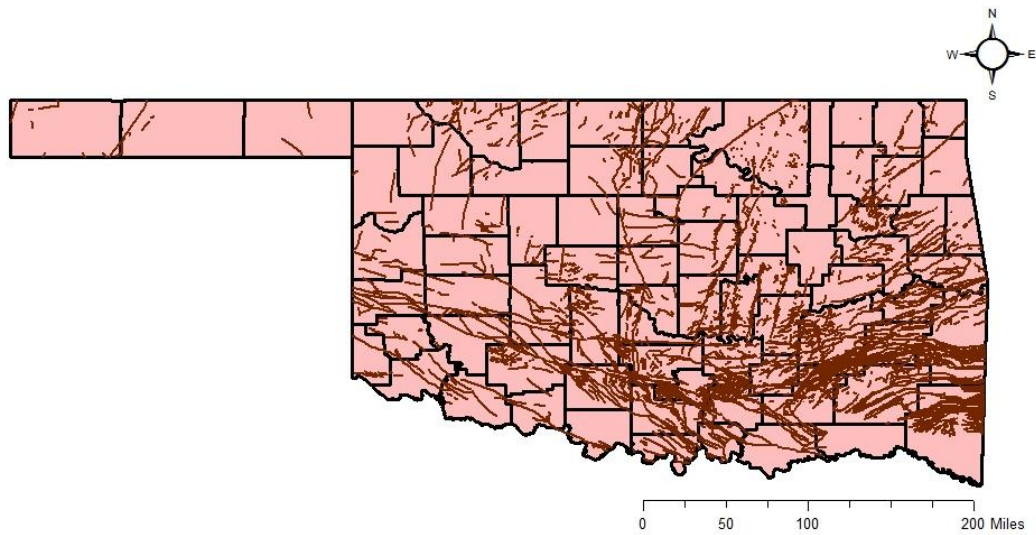
Mapping Attribute:

Used thematic map to symbolize the geological substrate of Oklahoma

Overlay:

County boundaries and Geology

Fault Lines and County Boundaries, Oklahoma



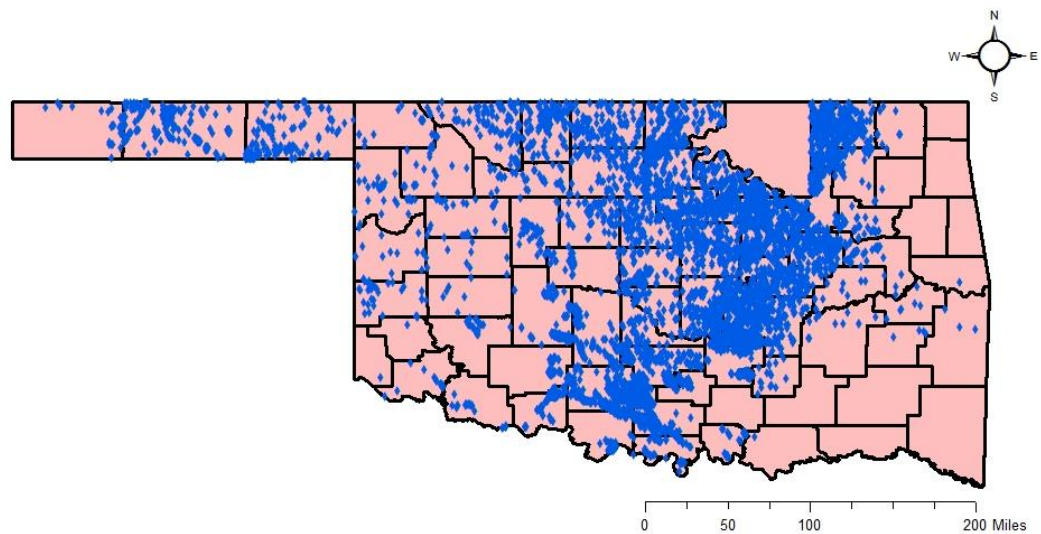
Legend

- Fault Lines
- County Boundaries

Overlay:

Fault lines and counties

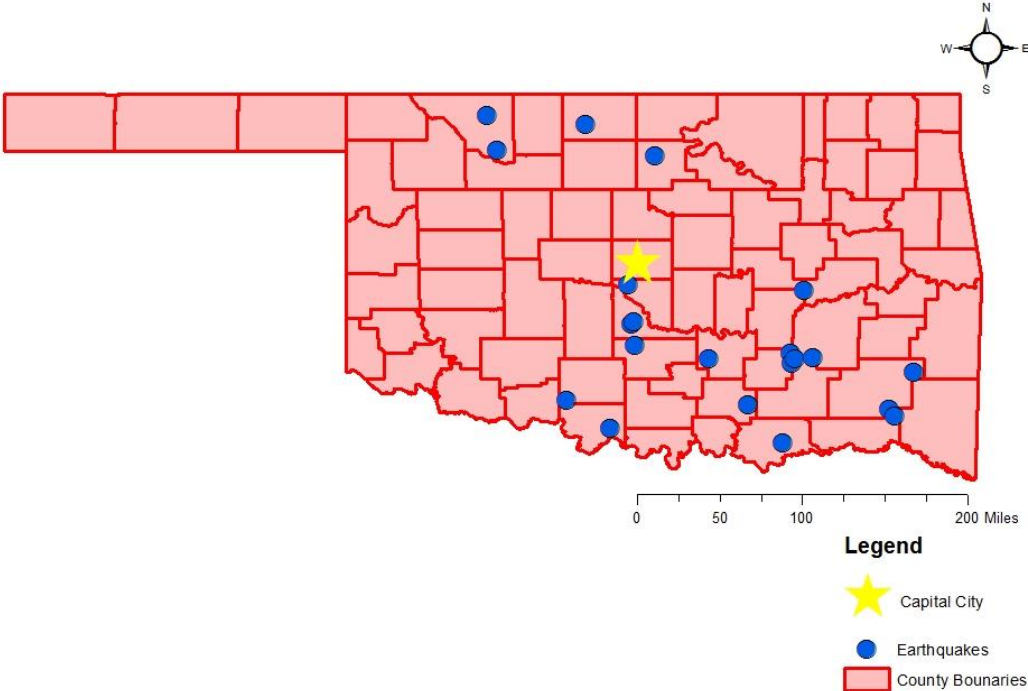
Oklahoma Counties and Fracking Locations



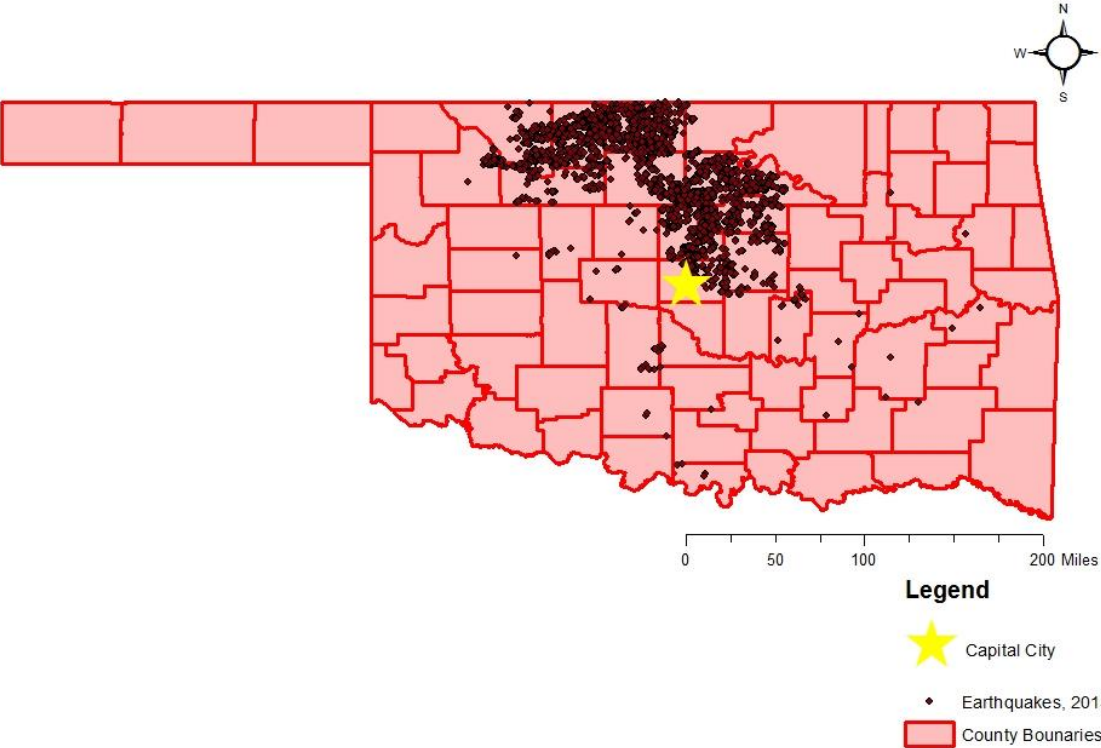
Legend

- ♦ Fracking Locations
- County Bounaries

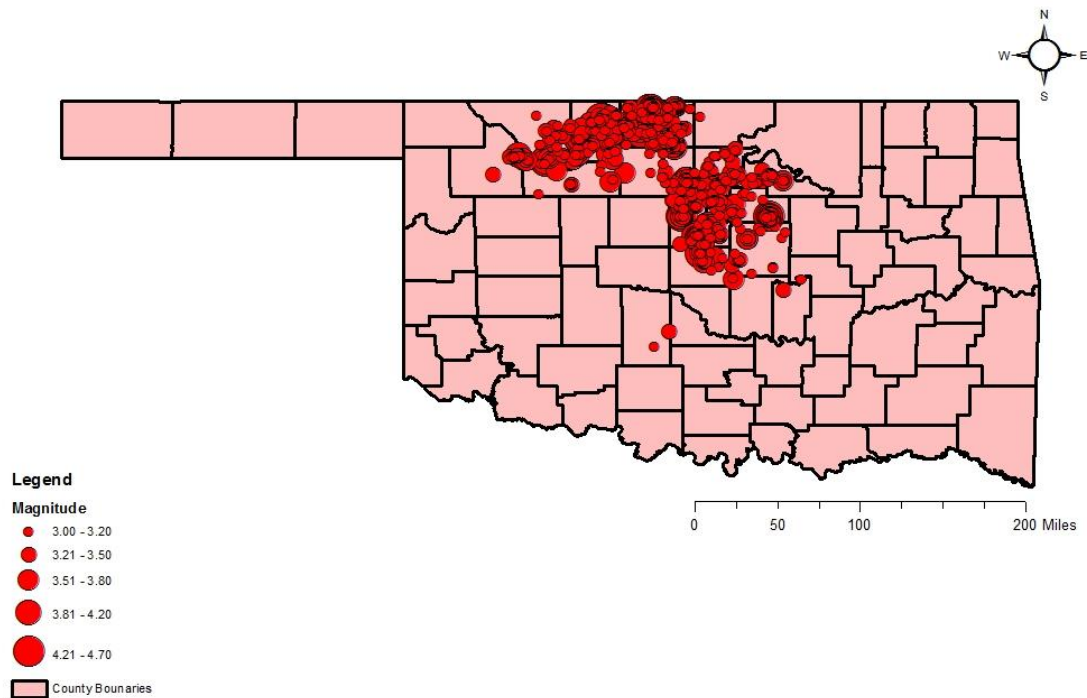
Earthquakes in Oklahoma, 2005



Earthquakes in Oklahoma, 2015



Earthquakes with Magnitude of 3 and Higher, 2015



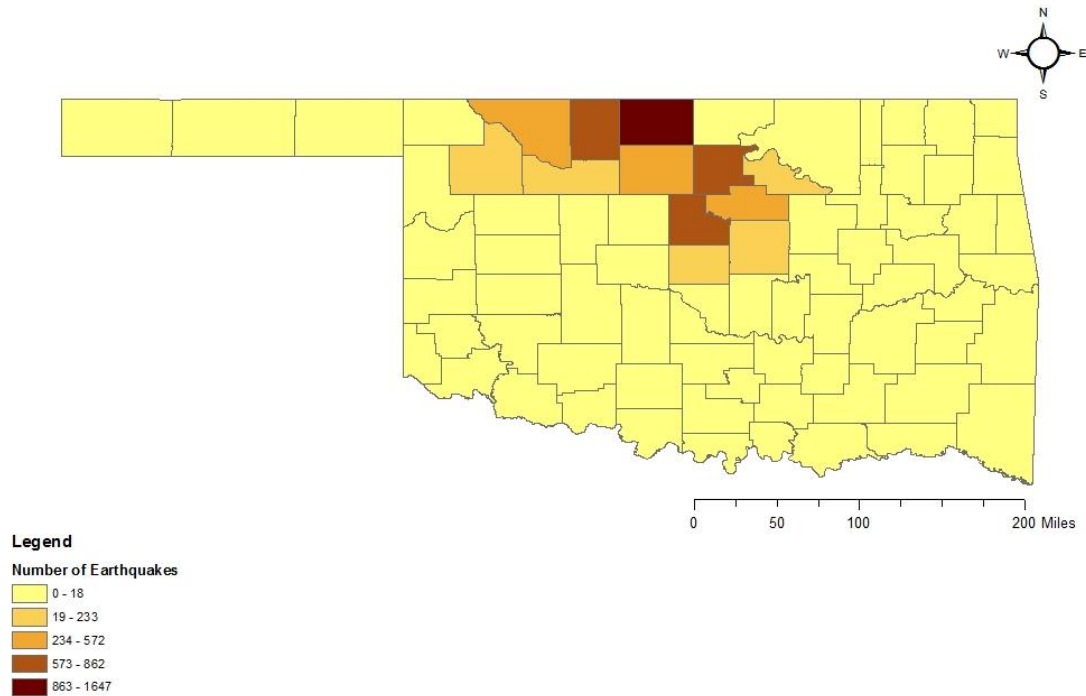
Attribute Selection:

Set up an attribute query to identify earthquakes with a mag of greater than or equal to 3.0

Mapping Attributes:

Proportional symbols to visualize mag

Oklahoma Counties by Earthquake Occurance



Spatial Join:

Joined Counties layer with earthquakes, 2015 layer to create a new shapefile. This spatial join allows us to symbolize counties by amount of earthquakes.